

Titanium™

GLENDALERV



TOUR EDITION

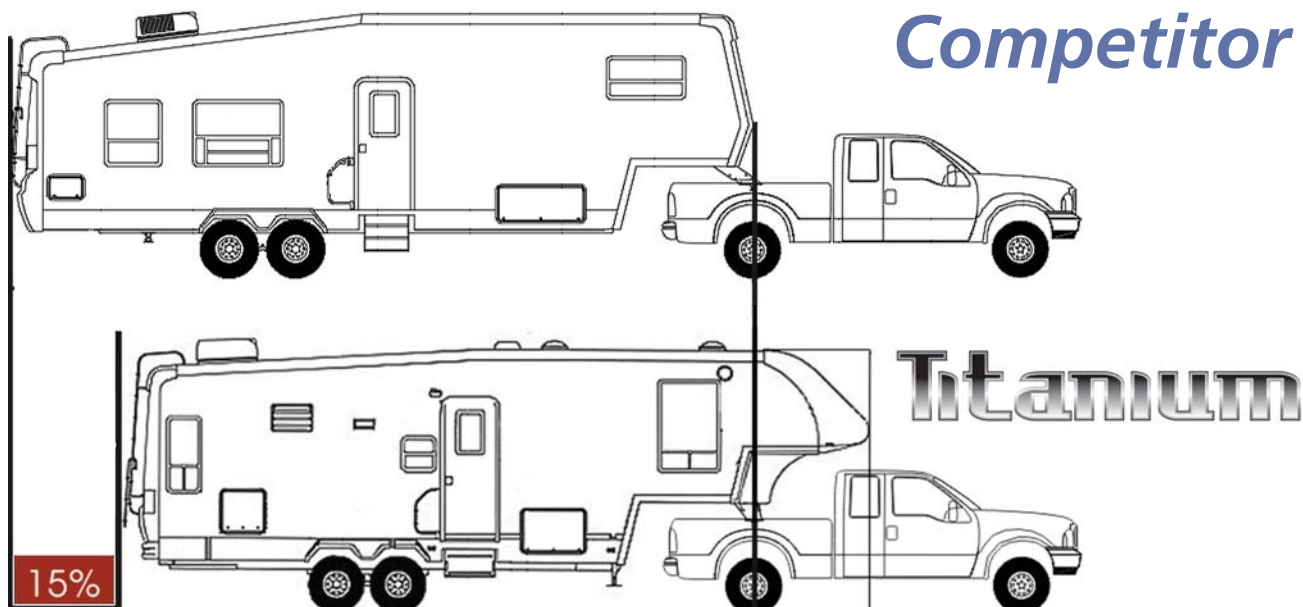
58th
Anniversary

Buyers' Guide

Patented Front Cap Design Advantage...

Cab Over

The illustration below compares two fifth wheels of EQUAL overall length. The fifth wheel truck and trailer combination on the top image shows a conventional fifth wheel pin box and front Cap design. The Titanium image below shows the Advantage of the Unique Cab over Front Cap design and pin box position.



The Titanium illustration shows a 15% shorter tow length VS the very same overall competitor length.

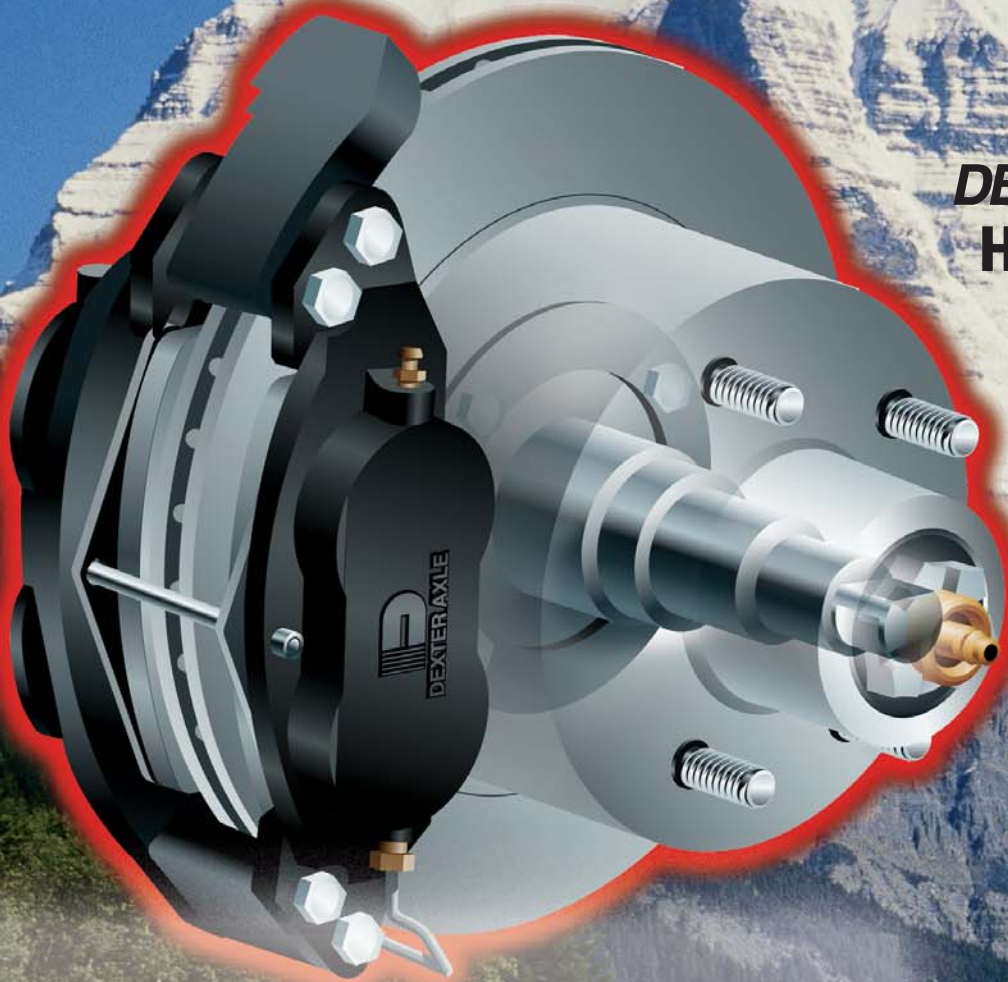


Titaniums innovative front cap has been engineered to maximize the aerodynamics. Results equal less sway, easier towability and increased fuel economy.

SAFER TOWING



DEXTER AXLE HYDRAULIC DISC BRAKES



TAME THE STEEPEST GRADES

- Fixed caliper opposing piston technology as used in racing for superior durability.
- Self-adjusting calipers eliminate manual brake adjustments.
- Brake pads can be replaced without removing caliper.
- Improved resistance to brake fade.
- Lower maintenance cost.
- Quieter smoother controlled braking.
- Two-year limited warranty.



RE Suspension System

IS AVAILABLE ON ALL
TOUR EDITION MODELS

"30% better protection against damaging road shock for your Fifth Wheel and interior cargo."

"Result is a smoother, stable controlled towing experience."



NEV-R-LUBE™
SEALED CARTRIDGE BEARING SYSTEM

Never needs greasing or re-packing!!!

No more inner and outer bearings!

No need to pull the hubs to repack the bearings!

No need to replace seals when you check the brakes!

NEW
25E30
STANDARD

WEIGHTS

Dry Pin Weight

1,429 lbs.

Dry Weight

7,853 lbs.

GVWR

9,968 lbs.



MAIN BODY WIDTH	OVERALL LENGTH	LENGTH PIN TO BUMPER	OVERALL HEIGHT	TANK CAPACITIES (gallon)			SLEEPS	AWNING	ELECTRICAL HOOKUP	TIRES
96"	30'5"	25'3"	12'5"	FR 63	GR 49	SEW 49	4	13'	30amp	ST235/80R16E

NEW
25E30
TWIN OPTION

WEIGHTS

Dry Pin Weight

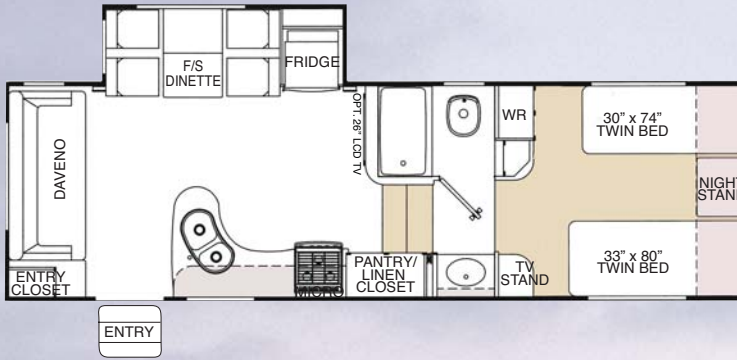
1,429 lbs.

Dry Weight

7,853 lbs.

GVWR

9,968 lbs.



MAIN BODY WIDTH	OVERALL LENGTH	LENGTH PIN TO BUMPER	OVERALL HEIGHT	TANK CAPACITIES (gallon)			SLEEPS	AWNING	ELECTRICAL HOOKUP	TIRES
96"	30'5"	25'3"	12'5"	FR 63	GR 49	SEW 49	4	13'	30amp	ST235/80R16E



26E31DS

WEIGHTS

Dry Pin Weight

1,760 lbs.

Dry Weight

9,108 lbs.

GVWR

11,600 lbs.



MAIN BODY WIDTH	OVERALL LENGTH	LENGTH PIN TO BUMPER	OVERALL HEIGHT	TANK CAPACITIES (gallon)			SLEEPS	AWNING	ELECTRICAL HOOKUP	TIRES
96"	32'4"	27'	12'5"	FR 63	GR 49	SEW 49	4-6	18'	30amp	ST235/80R16E

28E33SA

WEIGHTS

Dry Pin Weight

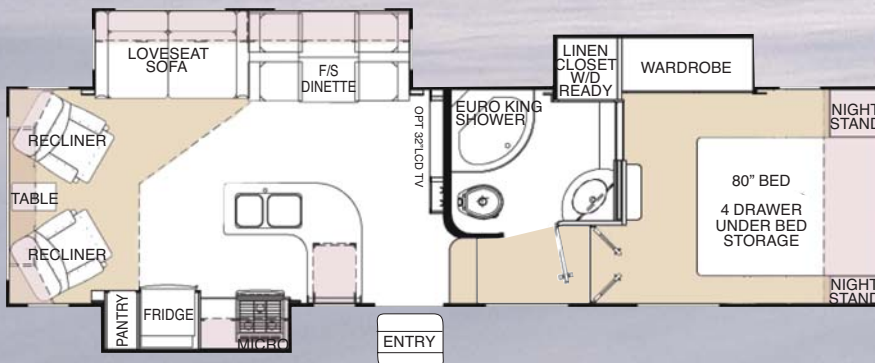
1,925 lbs.

Dry Weight

9,691 lbs.

GVWR

12,302 lbs.



MAIN BODY WIDTH	OVERALL LENGTH	LENGTH PIN TO BUMPER	OVERALL HEIGHT	TANK CAPACITIES (gallon)			SLEEPS	AWNING	ELECTRICAL HOOKUP	TIRES
96"	34'7"	29'5"	12'6"	FR 63	GR 49	SEW 49	4-6	16'	30amp	ST235/80R16E

30E35SA

WEIGHTS

Dry Pin Weight

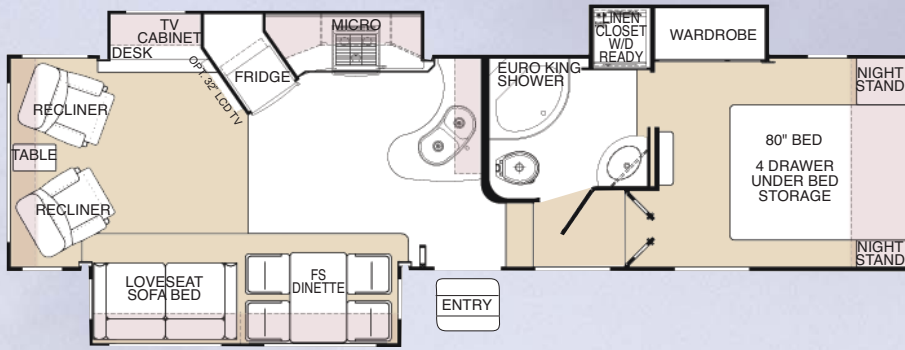
2,092 lbs.

Dry Weight

11,110 lbs.

GVWR

13,998 lbs.



MAIN BODY WIDTH	OVERALL LENGTH	LENGTH PIN TO BUMPER	OVERALL HEIGHT	TANK CAPACITIES (gallon)			SLEEPS	AWNING	ELECTRICAL HOOKUP (detachable cord)	TIRES
				FR	GR	SEW				
96"	36'5"	31'3"	12'9"	63	49	49	4-6	13'	50amp	ST235/80R16E

32E37SA

WEIGHTS

Dry Pin Weight

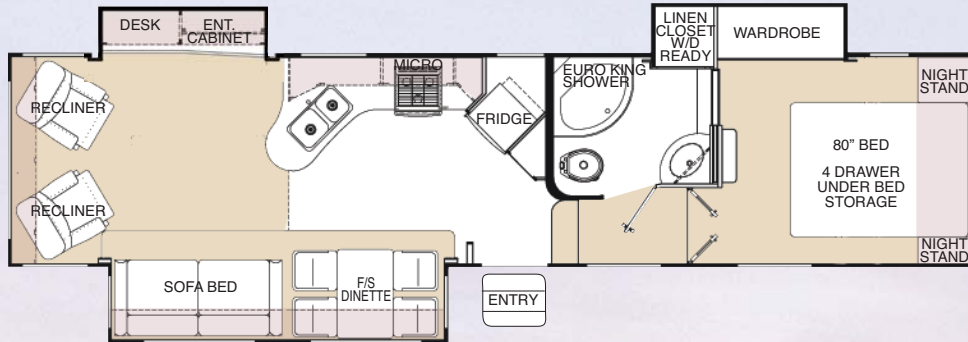
2,228 lbs.

Dry Weight

11,432 lbs.

GVWR

14,423 lbs.



MAIN BODY WIDTH	OVERALL LENGTH	LENGTH PIN TO BUMPER	OVERALL HEIGHT	TANK CAPACITIES (gallon)			SLEEPS	AWNING	ELECTRICAL HOOKUP (detachable cord)	TIRES
				FR	GR	SEW				
96"	38'11"	33'8"	12'8"	63	49	49	4-6	14'	50amp	ST235/80R16E

32E37TS

WEIGHTS

Dry Pin Weight

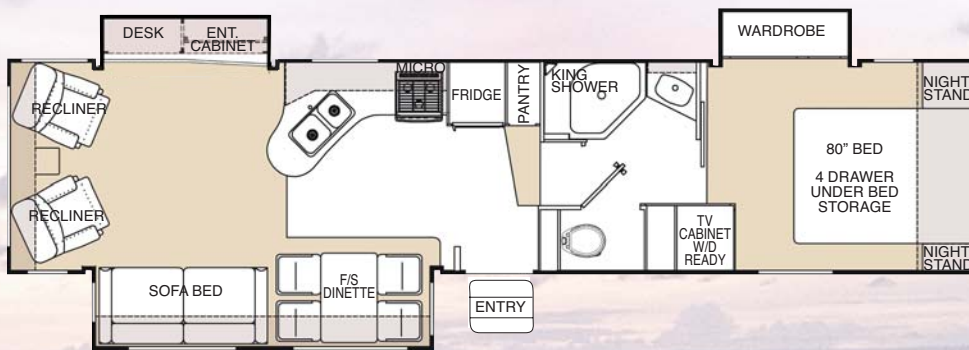
2,015 lbs.

Dry Weight

10,934 lbs.

GVWR

13,664 lbs.



MAIN BODY WIDTH	OVERALL LENGTH	LENGTH PIN TO BUMPER	OVERALL HEIGHT	TANK CAPACITIES (gallon)			SLEEPS	AWNING	ELECTRICAL HOOKUP (detachable cord)	TIRES
				FR	GR	SEW				
96"	38'11"	33'8"	12'8"	63	49	49	4-6	15'	50amp	ST235/80R16E

NEW 34E39QSSA

WEIGHTS

Dry Pin Weight

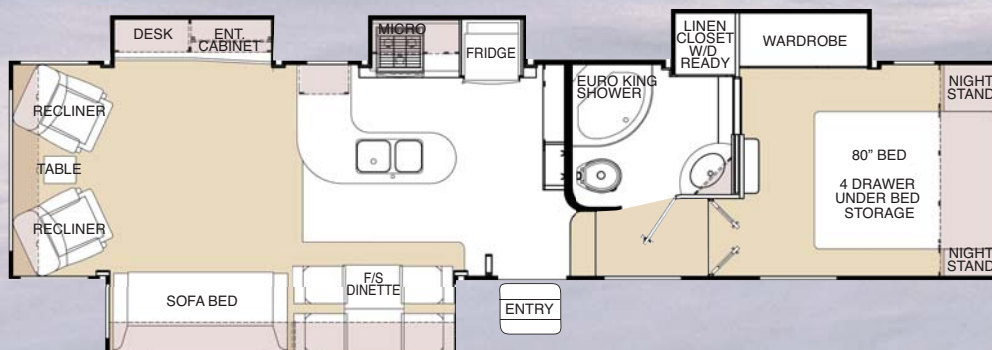
2,165 lbs.

Dry Weight

11,858 lbs.

GVWR

14,667 lbs.



MAIN BODY WIDTH	OVERALL LENGTH	LENGTH PIN TO BUMPER	OVERALL HEIGHT	TANK CAPACITIES (gallon)			SLEEPS	AWNING	ELECTRICAL HOOKUP (detachable cord)	TIRES
				FR	GR	SEW				
96"	39'1"	33'10"	12'8"	63	49	49	4-6	16'	50amp	ST235/80R16E

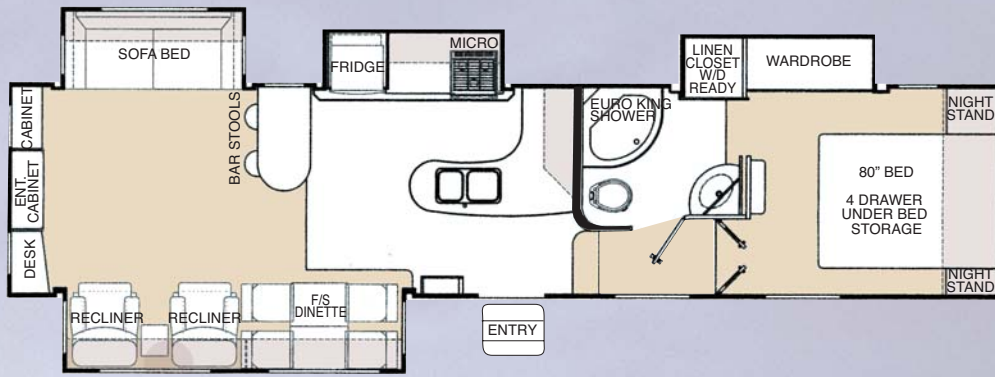
34E39RE

WEIGHTS

Dry Pin Weight
2,200 lbs.

Dry Weight
11,948 lbs.

GVWR
14,338 lbs.



MAIN BODY WIDTH	OVERALL LENGTH	LENGTH PIN TO BUMPER	OVERALL HEIGHT	TANK CAPACITIES (gallon)			SLEEPS	AWNING	ELECTRICAL HOOKUP (detachable cord)	TIRES
96"	40'1"	34'10"	12'8"	FR 63	GR 49	SEW 49	6	16'	50amp	ST235/80R16E

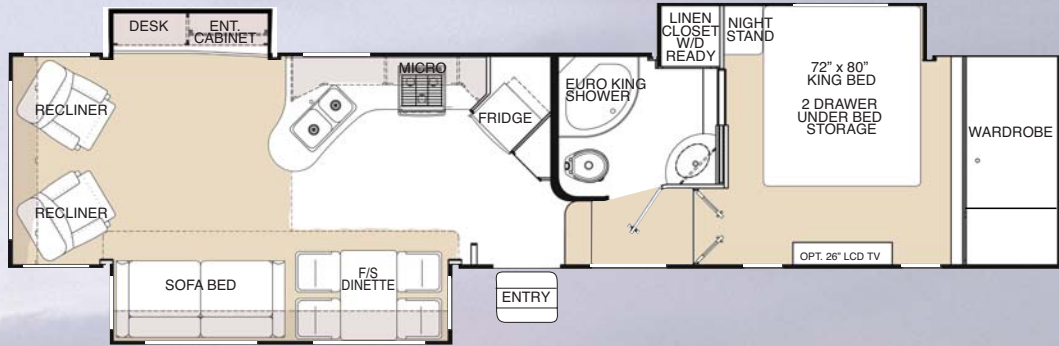
NEW 36E41KB

WEIGHTS

Dry Pin Weight
1,750 lbs.

Dry Weight
12,147 lbs.

GVWR
15,251 lbs.



MAIN BODY WIDTH	OVERALL LENGTH	LENGTH PIN TO BUMPER	OVERALL HEIGHT	TANK CAPACITIES (gallon)			SLEEPS	AWNING	ELECTRICAL HOOKUP (detachable cord)	TIRES
96"	41'8"	36'6"	12'8"	FR 63	GR 49	SEW 49	4-6	14'	50amp	ST235/80R16E

36E41TBR

WEIGHTS

Dry Pin Weight
2,215 lbs.

Dry Weight
12,562 lbs.

GVWR
15,703 lbs.



MAIN BODY WIDTH	OVERALL LENGTH	LENGTH PIN TO BUMPER	OVERALL HEIGHT	TANK CAPACITIES (gallon)			SLEEPS	AWNING	ELECTRICAL HOOKUP (detachable cord)	TIRES
96"	42'2"	36'11"	12'11"	FR 63	GR 49	SEW 49	8-10	21'	50amp	ST235/80R16E

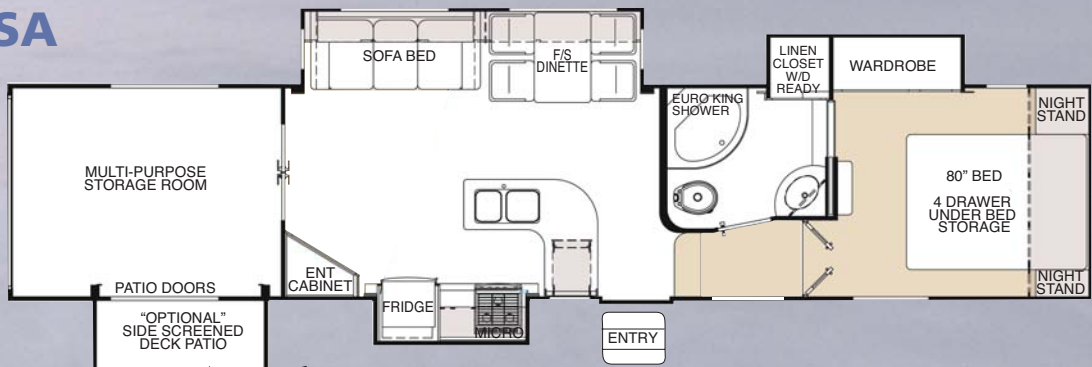
NEW 36E41MPRVSA

WEIGHTS

Dry Pin Weight
2,605 lbs.

Dry Weight
12,606 lbs.

GVWR
15,670 lbs.



MAIN BODY WIDTH	OVERALL LENGTH	LENGTH PIN TO BUMPER	OVERALL HEIGHT	TANK CAPACITIES (gallon)			SLEEPS	AWNING	ELECTRICAL HOOKUP (detachable cord)	TIRES
96"	42'2"	36'11"	12'8"	FR 63	GR 49	SEW 49	6	20'	50amp	ST225/75R15D

Standard Features

- DVD surround sound system
- Atwood XT water heater
- Exterior rinse shower
- 400 watt inverter
- Free standing dinette
- Premium coil inner spring bed mattress
- Daveno (36E41TBR & 25E30 only)
- Solid surface kitchen countertop with deep moulded sinks
- Porcelain toilet with hand sprayer
- Day and night shades
- Bath skylight above shower
- A&E 8500 Plus awning
- Beech colored baseboards and ceiling crown mouldings
- Bullet style directional reading lamps
- Wired for second A/C (50 amp models only)
- 3 burner range with Piezo ignition
- 12V system quick disconnect switch
- Heated, insulated enclosed holding tanks with black tank flush system
- Spare tire and rim
- LED flashlight
- Fold away entry assist handle
- Single lever kitchen faucet with hand rinse attachment
- Water filtration system
- Attic vents
- Cable hookup
- Satellite hookup
- Roof ladder
- Loveseat/sofa bed sleep & store air mattress (see individual floorplans)

Available Options

- Electric fireplace insert (n/a 25E30 or 28E33SA)
- MorRyde pin box
- 6,000 lb axle upgrade (25E30 or 26E31DS PP only)
- 7,000 lb axle upgrade (28E33SA, 30E35SA, 32E37SA, 32E37TS or 34E39QSSA PP only)
- Generator ready (LP and electrical lines, box and venting, harness, switch)
- Generator rough-in (LP and electrical lines only)
- Screened side deck patio (36E41MPRVSA PP only)
- Rear retractable screen (36E41MPRVSA only)*
- Curbside slideout awning (34E39S and 36E41KB)*
- 30" convection microwave
- Slideout topper awning
- 10 cu ft refrigerator (PP only)
- Leather sofa bed (sofa bed units only)

- Rear electric stabilizer jacks*
- Leather recliner
- 13,500 BTU second air conditioner (50 amp models only)
- Second furnace (36E41TBR only)*
- 19" HD LCD bedroom TV (all SAs, 25E30, 34E39RE and 36E41TBR)*
- 20" CRT bedroom TV (26E31DS and 32E37TS)*
- 26" LCD HDTV (25E30, 26E31DS, 36E41TBR and Bedroom of 36E41KB)*
- 32" L/R LCD HDTV (n/a 25E30, 26E31DS and 36E41TBR)*

Featured Option Packages*

*Interior Comfort Package**

- Excalibur whisper quiet 2 stage furnace
- 30" microwave
- Video distribution center
- Central vacuum system
- 9 cu ft Dometic refrigerator
- Washer/dryer ready (n/a 25E30 and 26E31DS)
- Ceiling paddle fan (n/a 25E30)
- Atwood XT DSI G/E 16 gallon output water heater
- Fluorescent lighting
- Digital wall mount dual control thermostat
- 12V remote controlled powered roof vent
- Oak laminate flooring in kitchen area
- 15,000 BTU air conditioner with trickle charger solar panel, HEPA filter and cool down diverter

*Exterior Package**

- High gloss GEL-COAT vacuum bonded sidewalls
- MorRyde RE suspension system (n/a 25E30)
- Hydraulic disc brakes (n/a 25E30)
- Thermopane windows
- Dual exterior security lights
- Aluminum rims
- Nev-R-Lube axles
- Dual powered front landing gear
- Wide track easy fold triple entry steps
- Premium exterior graphics package

Mystique Exterior Package(PP)

- Full body color infused exterior fiberglass
- Color matched awning and hardware

PP = Pre-production only

n/a = not available

* indicates popular mandatory build options

32E37TS



Taupe Decor Scheme

34E39RE



- *Solid surface countertop with deep double sinks fitting full plates and larger pots and pans.*
- *Higher and deeper slideouts allow for larger windows and built in overhead cabinets for added storage.*
- *Smart use of flooring area with no carpet in the kitchen or bathroom area.*
- *Double water filter system to protect pump and improve water quality.*
- *Adjustable style reading lights, recessed under overhead cabinets.*
- *Free standing dinette includes extension flip-up table with under seat storage.*

32E37SA



Cinnamon Decor Scheme

Check out the Virtual Tours at

36E41KB



King Bed

- *Ensuite bath has privacy with added pocket slide door where other designs have their vanity and shower in the bedroom.*
- *Residential single lever faucet with telescopic spout.*
- *Large king size shower with seat feature.*
- *R24 insulation value in the front cap area.*
- *Large picture windows provide excellent cross ventilation.*
- *Excellent storage with deep drawers.*
- *Washer/dryer ready.*
- *Unique vaulted ceilings.*

36E41KB



Optional Bedroom Fireplace

36E41KB



Cinnamon Decor Scheme

GLENDALE RV



145 Queen Street
Strathroy, ON N7G 3J6

All photographs and specifications contained in this brochure are based on the latest product information at the time of publication approval. Some equipment shown or described throughout this guide may be available as an option only. Glendale has the right to add or discontinue models without prior notice, and to make changes at any time without notice in colors, materials, equipment, specifications, and models.

Titanium Dealer:



MYSTIQUE

To view further technical and construction information please visit our website at

www.glendalerv.com