

# Titanium



## Buyer's Guide



[www.glendalery.com](http://www.glendalery.com)



*"30% better protection against damaging road shock for your fifth wheel and interior cargo"*



*"16 Gallon Performance from a 10 Gallon tank"*



*Never needs greasing or re-packing!!!*





**HYDRAULIC  
DISC  
BRAKES**

**DEXTER AXLE**



**60** Years of Continued *Quality*

Glendale RV began producing Recreational Vehicles in 1950 and quickly became known for producing some of the finest RVs built in North America. Our innovation and attention to detail has made Glendale Recreational Vehicles into what we are today; the largest Canadian RV manufacturer in the business. Glendale sells more RVs in Canada than any other RV Manufacturer.

- Quieter, smoother controlled braking
- Improved resistance to brake fade

**GLENDALE RV**

145 Queen Street  
Strathroy, ON  
Canada  
N7G 3J6

Phone: 519-245-1600

## Standard Features

- DVD surround sound system
- Atwood XT water heater
- Exterior rinse shower
- 400 watt inverter
- Free standing dinette
- Premium coil inner spring bed mattress
- Solid surface kitchen countertop with deep molded sinks
- Porcelain toilet with hand sprayer
- Day and night shades
- Bath skylight above shower
- Bullet style directional reading lamps
- Wired for second A/C (50 amp models only)
- 3 burner range with piezo ignition
- 12V system quick disconnect switch
- Heated, insulated enclosed holding tanks with black tank flush system
- Spare tire and rim
- Fold away entry assist handle
- Single lever kitchen faucet with hand rinse attachment
- Water filtration system
- Attic vents
- Cable hookup
- Satellite hookup
- Roof ladder
- Loveseat/sofa bed sleep & store air mattress (see floorplans)
- High intensity LED travel lights

\* indicates popular build options

B/D = Bedroom

L/R = Livingroom

PP = Pre-production only

N/A = not available

## Available Options

- Electric fireplace insert (N/A 28E33SAi)
- MorRyde pin box
- 7,000 lb axle upgrade (28E33SAi, 30E35SA/SAi, 32E37SA PP only)
- Generator ready (LP and electrical lines, box and venting, harness, switch)
- Generator rough-in (LP and electrical lines only)
- Screened side deck patio (36E41MPRVSA PP only)
- Rear retractable screen (36E41MPRVSA only)\*
- 9100 series curbside slideout power awning (select models)
- 9100 series power awning\*
- 30" convection microwave
- Slideout topper awnings
- 10 cu ft refrigerator (PP only)
- Leather sofa beds (sofa bed units only)
- Rear electric stabilizer jack\*
- Leather recliner
- 13,500 BTU second air conditioner (50 amp models only)
- 17" B/D flip down 12V LCD TV with built-in DVD (all SA/SAi models, 34E39RE)\*
- 26" B/D LCD HDTV (34E39KB, 34E39KBi)\*
- 32" L/R LCD HDTV (all SA/SAi and KB/KBi models)\*
- Roll out desk (30E35SA, 30E35SAi, 34E39KB, 34E39KBi)\*
- 40" L/R LCD HDTV & fireplace combo (34E39RE only)\*

## Featured Option Packages

### Interior Comfort Package\*

- Excalibur whisper quiet 2 stage furnace
- 30" microwave
- Video distribution center
- Central vacuum system
- 9 cu ft refrigerator
- Washer/dryer ready (N/A 26E31DS)
- Ceiling paddle fan
- Atwood XT DSI G/E 16 gallon output water heater
- Fluorescent lighting
- Digital wall mount dual control thermostat
- 12V remote controlled powered roof vent
- Oak laminate flooring in kitchen
- 15,000 BTU air conditioner with trickle charger solar panel, HEPA filter and cool down diverter

### Exterior Package\*

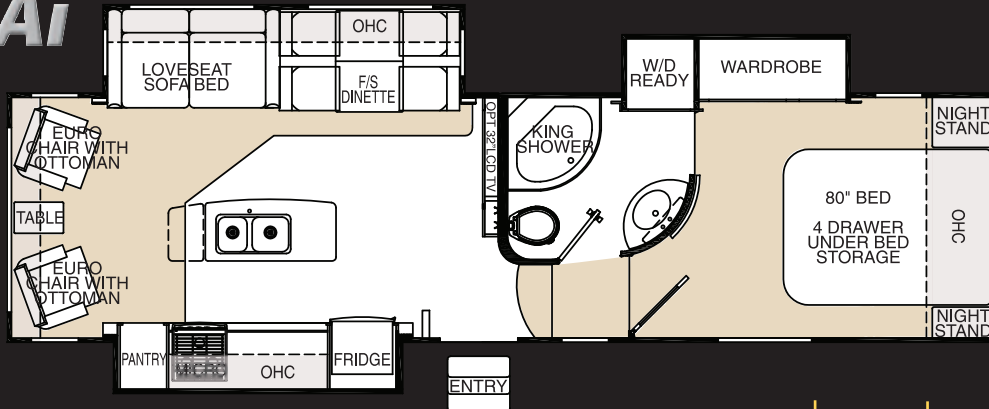
- High gloss GEL-COAT vacuum bonded sidewalls
- MorRyde pin box
- Aluminum rims
- Hydraulic disc brakes
- Thermopane windows
- Nev-R-Lube axles
- Dual powered front landing gear
- Wide track easy fold triple entry steps
- Premium exterior graphics package

### Mystique Exterior Package (PP)

- Full body color infused exterior fiberglass
- Color matched awning and hardware

# 28E33SAi

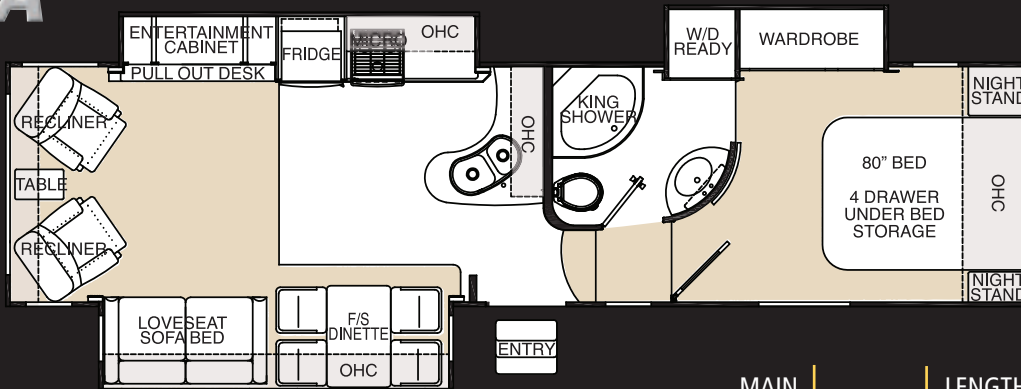
Dry Pin Weight  
**2,170 lbs.**  
 Dry Axle Weight  
**8,535 lbs.**  
 Dry Weight  
**10,705 lbs.**  
 GVWR  
**13,496 lbs.**



MAIN BODY WIDTH	OVERALL LENGTH	LENGTH PIN TO BUMPER	OVERALL HEIGHT
<b>96"</b>	<b>34'7"</b>	<b>29'5"</b>	<b>12'6"</b>

# 30E35SA

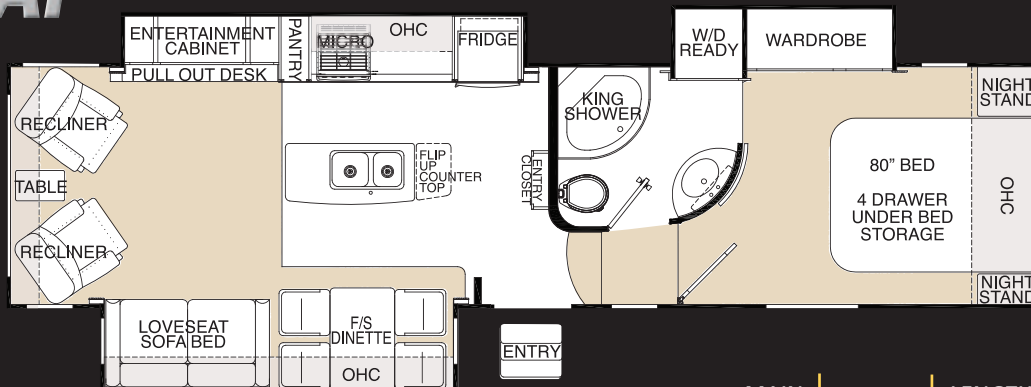
Dry Pin Weight  
**2,110 lbs.**  
 Dry Axle Weight  
**9,170 lbs.**  
 Dry Weight  
**11,280 lbs.**  
 GVWR  
**13,996 lbs.**



MAIN BODY WIDTH	OVERALL LENGTH	LENGTH PIN TO BUMPER	OVERALL HEIGHT
<b>96"</b>	<b>36'5"</b>	<b>31'3"</b>	<b>12'9"</b>

# 30E35SAi

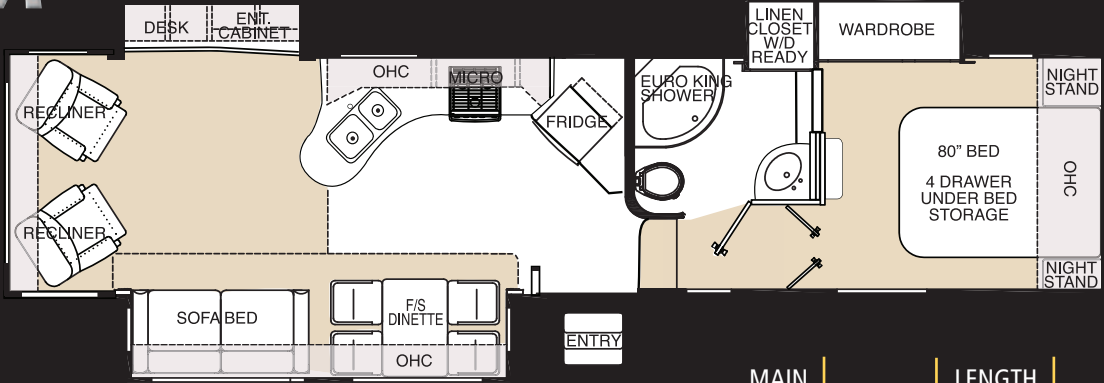
Dry Pin Weight  
**2,167 lbs.**  
 Dry Axle Weight  
**9,423 lbs.**  
 Dry Weight  
**11,590 lbs.**  
 GVWR  
**13,996 lbs.**



MAIN BODY WIDTH	OVERALL LENGTH	LENGTH PIN TO BUMPER	OVERALL HEIGHT
<b>96"</b>	<b>36'5"</b>	<b>31'3"</b>	<b>12'9"</b>

# 32E37SA

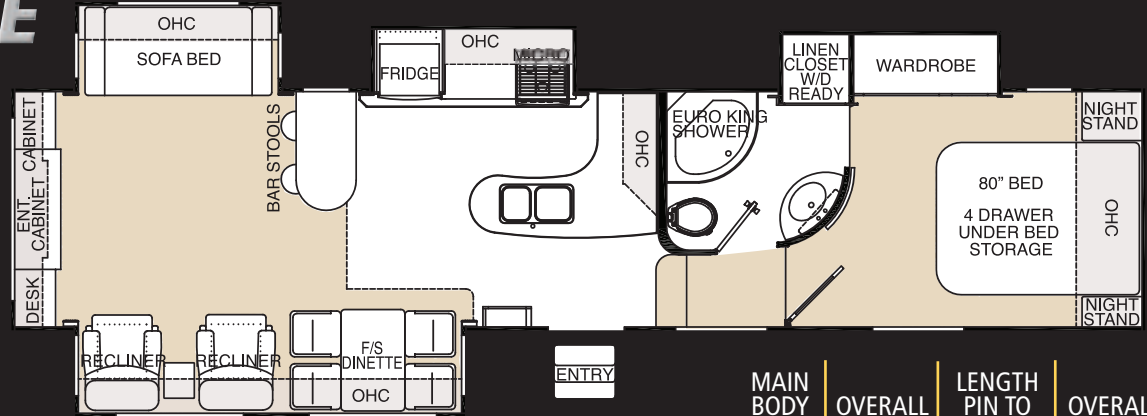
Dry Pin Weight  
**2,318 lbs.**  
 Dry Axle Weight  
**9,448 lbs.**  
 Dry Weight  
**11,766 lbs.**  
 GVWR  
**14,794 lbs.**



MAIN BODY WIDTH	OVERALL LENGTH	LENGTH PIN TO BUMPER	OVERALL HEIGHT
<b>96"</b>	<b>38'11"</b>	<b>33'8"</b>	<b>12'8"</b>

# 34E39RE

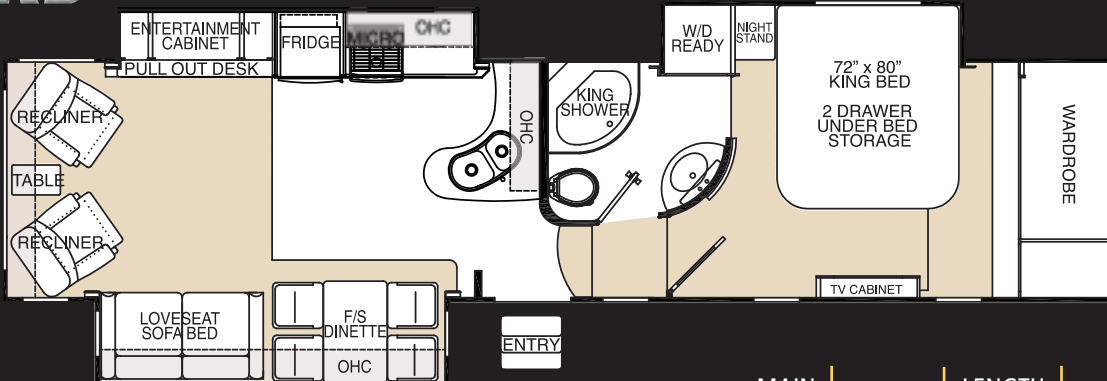
Dry Pin Weight  
**2,435 lbs.**  
 Dry Axle Weight  
**9,939 lbs.**  
 Dry Weight  
**12,374 lbs.**  
 GVWR  
**14,996 lbs.**



MAIN BODY WIDTH	OVERALL LENGTH	LENGTH PIN TO BUMPER	OVERALL HEIGHT
<b>96"</b>	<b>40'1"</b>	<b>34'10"</b>	<b>12'8"</b>

# 34E39KB

Dry Pin Weight  
**2,300 lbs.**  
 Dry Axle Weight  
**10,066 lbs.**  
 Dry Weight  
**12,366 lbs.**  
 GVWR  
**14,996 lbs.**

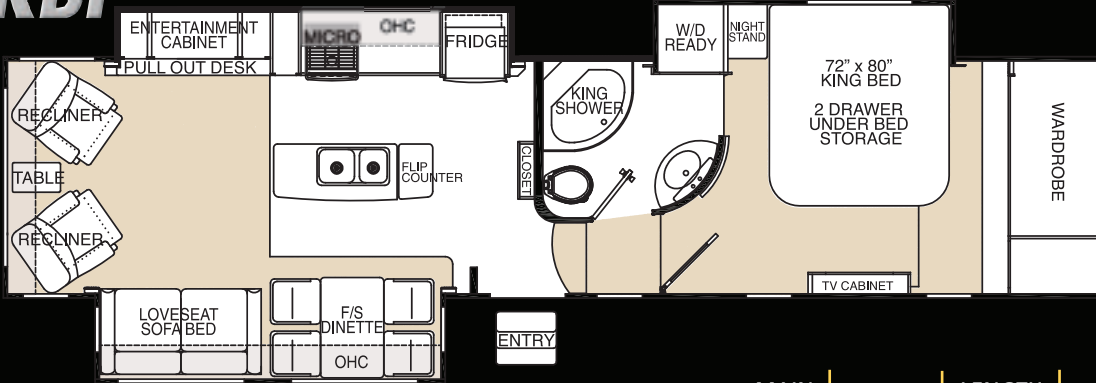


MAIN BODY WIDTH	OVERALL LENGTH	LENGTH PIN TO BUMPER	OVERALL HEIGHT
<b>96"</b>	<b>39'5"</b>	<b>34'4"</b>	<b>12'9"</b>



# 34E39KBi

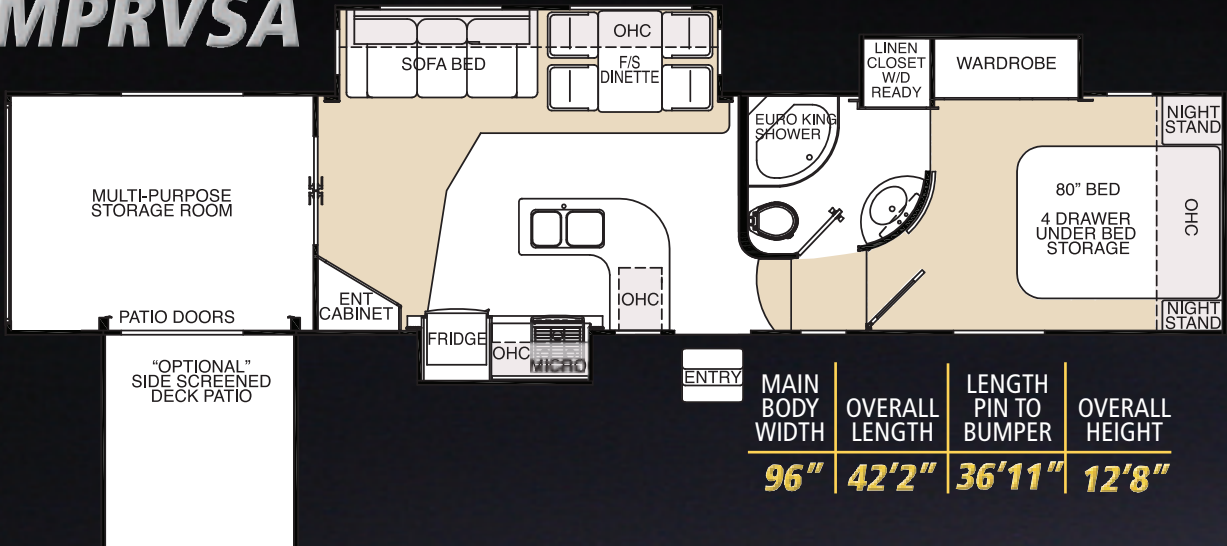
Dry Pin Weight  
**2,205 lbs.**  
 Dry Axle Weight  
**10,220 lbs.**  
 Dry Weight  
**12,425 lbs.**  
 GVWR  
**14,996 lbs.**



MAIN BODY WIDTH	OVERALL LENGTH	LENGTH PIN TO BUMPER	OVERALL HEIGHT
<b>96"</b>	<b>39'5"</b>	<b>34'4"</b>	<b>12'9"</b>

# 36E41MPRVSA

Dry Pin Weight  
**2,655 lbs.**  
 Dry Axle Weight  
**10,870 lbs.**  
 Dry Weight  
**13,525 lbs.**  
 GVWR  
**16,179 lbs.**



MAIN BODY WIDTH	OVERALL LENGTH	LENGTH PIN TO BUMPER	OVERALL HEIGHT
<b>96"</b>	<b>42'2"</b>	<b>36'11"</b>	<b>12'8"</b>

For Photos, Virtual Tours and further specifications visit our website at

[www.glendalery.com](http://www.glendalery.com)

All photographs and specifications contained in this brochure are based on the latest product information at the time of publication approval. Some equipment shown or described throughout this guide may be available as an option only. Glendale has the right to add or discontinue models without prior notice, and to make changes at any time without notice in colors, materials, equipment, specifications, and models.

